



Art. 400A01
Ghisa
107x100 mm



Art. 400A02
Ghisa
95x95 mm



Art. 400A03
Ghisa
110x110 mm



Art. 400A04
Ø 97 mm
Art. 400A07
Ø 120 mm



Art. 400A05
Ghisa
110x110 mm



Art. 400A06
Ghisa
108x108 mm



Art. 400B01
Ghisa
D 80 mm



Art. 400B02
Ghisa
D 130 mm



Art. 400B03
Ghisa
D 165 mm



Art. 400B04
Ghisa
120x85 mm



Art. 400B05
Ghisa
D 140 mm



Art. 400B06
Ghisa
D 100 mm



Art. **401A01**
Ghisa
420x108 mm



Art. **401A02**
Ghisa
315x110 mm



Art. **401A03**
Ghisa
330x105 mm



Art. **401A04**
Ghisa
280x105 mm



Art. **401A05**
Ghisa
345x103 mm



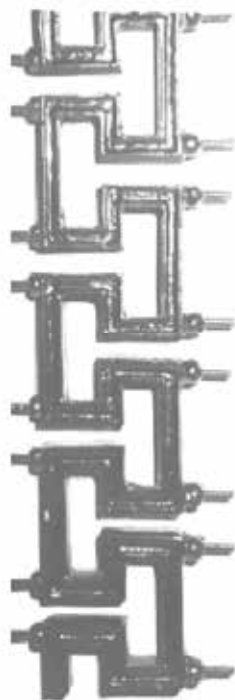
Art. **401A06**
Ghisa
360x100 mm



Art. **401A07**
Ghisa
610x107 mm



Art. **401B01**
500x130 mm



Art. **401B02**
500x130 mm



Art. **401B03**
foro filettato
220x100 mm
spessore 15mm



Art. **401B04**
foro filettato
220x100 mm
spessore 15mm



Art. **401B05**
2 fori filettati
210x330 mm
spessore 28mm



Art. **401B06**
2 fori filettati
210x330 mm
spessore 28mm



Art. **401B07**
2 fori filettati
180x347 mm
spessore 28mm



Art. **401B08**
4 fori filettati
245x285 mm
spessore 7mm



Art. **401B09**
2 fori filettati
470x195 mm
spessore 20mm



Art. **401B10**
220x230 mm
spessore 20mm



foro filettato
spessore 32mm

401B11
300x170 mm

401B12
385x210 mm

401B13
460x265 mm



Art. 401C01
390x110 mm



Art. 401C02
350x110 mm



Art. 401C03
440x110 mm



Art. 401C04
270x100 mm



Art. 401C05
450x100 mm



Art. 401C06
830x130 mm



Art. 401C07
830x155 mm



Art. 401C08
870x120 mm



Art. **402A01**
Ghisa
720x260 mm



Art. **402A02**
380x230 mm
Art. **402A03**
480x230 mm
Art. **402A04**
580x280 mm

Art. **402A08**
620x290 c/gancio



Art. **402A05** per ferro a "T" da 80 85x165 mm
Art. **402A06** per ferro a "T" da 100 90x180 mm
Art. **402A07** per ferro a "T" da 120 95x190 mm

Art. **402A10** per ferro a "T" da 80 85x165 mm (con lama)
Art. **402A11** per ferro a "T" da 100 90x180 mm (con lama)



Art. **402B01**
Ghisa
440x210mm



Art. **402B02**
Ghisa
300x115 mm



Art. **402B03**
300x145 mm



Art. **402C01**
45x110 mm



Art. **402C02**
70x55 mm



Art. **402C03**
Øbase 170 mm H 230 mm



Art. **403A01** Foro □ 25 mm
 Art. **403A02** Foro □ 30 mm
 Ghisa Ø140 H 30 mm



Art. **403A03** Foro □ 25 mm
 Art. **403A04** Foro □ 30 mm
 Ghisa Ø140 H 50 mm



Art. **403A05**
 Ghisa
 90x55x100 mm



Art. **403A06**
 Ghisa
 50 H 70 mm



Art. **403A07**
 Ghisa
 70x45x90 mm



Art. **403A08**
 Ghisa
 40 H 60 mm



Art. **403A09**
 Ghisa
 55x60x130 mm



Art. **403A10**
 Ghisa
 45x95x130 mm



Art. **403A11**
 Ghisa
 110x160 mm



Art. **403B01** 400x400 mm
Art. **403B02** 300x300 mm
Art. **403B03** 250x250 mm
Art. **403B04** 200x200 mm
Art. **403B05** 180x180 mm
Art. **403B06** 150x150 mm
Art. **403B07** 120x120 mm



Art. **403B08**
180x180 mm



piastra rigata

Art. **403B09A** 300 x 350 mm
Art. **403B09B** 350 x 400 mm
Art. **403B09C** 400 x 500 mm
Art. **403B09D** 500 x 600 mm
Art. **403B09E** 600 x 700 mm



piastra liscia

Art. **403B10A** 300 x 350 mm
Art. **403B10B** 350 x 400 mm
Art. **403B10C** 400 x 500 mm
Art. **403B10D** 500 x 600 mm
Art. **403B10E** 600 x 700 mm



Art. **404A10** Ø 42 mm
Art. **404A01** Ø 60 mm
Ghisa



Art. **404A11**
Ghisa
Ø 42 mm



Art. **404A02**
Ghisa
Ø 80 mm



Art. **404A03**
Ghisa
Ø 85 mm



Art. **404A04**
Ghisa
Ø 80 mm



Art. **404A05**
Ghisa
Ø 100 mm



Art. **404A06**
Ghisa
Ø 145 mm



Art. **404A07**
Ghisa
Ø 175 mm



Art. **404A08**
Ghisa
Ø 95 mm



Art. **404A09**
Ghisa
Ø 180 mm

ROSETTE E PIASTRINE IN GHISA



Art. **404B01** Ø135 mm
spessore 12 mm

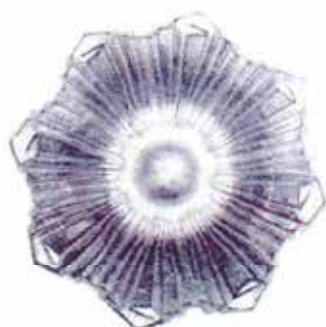
Art. **404B02** Ø115 mm
spessore 12 mm

Art. **404B03** Ø75 mm
spessore 9 mm
foro filettato



Art. **404B04** Ø100 mm
spessore 16 mm
foro filettato

FUSIONI DI ALLUMINIO



Art. **404B05** Ø105 mm
spessore 10,5 mm
foro filettato



Art. **404B06** 145x80 mm
spessore 15 mm
2 fori filettati



Art. **404B07** 180x140 mm
spessore 10 mm



Art. **404B08** 140x200 mm
spessore 10 mm

FREGI E STEMMI



Art. **404C01** 160X350 mm
spessore 45 mm



Art. **404C02** 295X275 mm
spessore 32 mm



Art. **404C03** 325X280 mm
spessore 35 mm

404C



Art. **405A01** H 130 mm



Art. **405A06** H 80 mm



Art. **405A02**
150x180 mm



Art. **405A07** H 80 mm



Art. **405A03** 120x200 mm
Art. **405A04** 220x300 mm



Art. **405A08** 200x300 mm

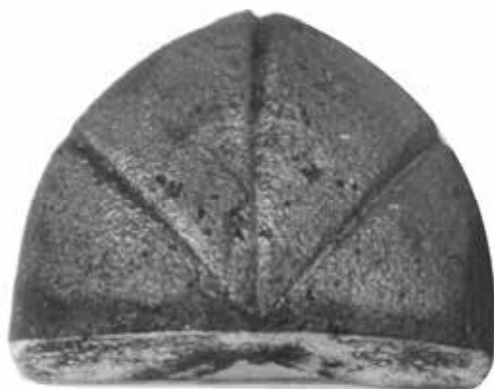


Art. **405A05**
150x200 mm



Art. **405A09** 220x230 mm

FERMACANCELLO IN GHISA



Art. **406A01**
Ghisa
105x90 mm



Art. **406A02**
160x50 mm
Art. **406A03**
140x45 mm
Art. **406A04**
180x50 mm
Art. **406A05**
210x70 mm
Art. **406A06**
120x40 mm



Art. 407A01
Ghisa
Base Ø45 mm
H 110 mm



Art. 407A02
Ghisa
Base Ø100 mm
H 180 mm



Art. 407A03
Ghisa
Base Ø36 mm
H 60 mm



Art. 408A01
Ghisa
Ø 70 mm
H 840 mm



Art. 408A02
Ghisa
H 840 mm



Art. 408A03
Ghisa
H 1160 mm



Art. 408A04
Ghisa
190x670 mm



Art. 408A05
Ghisa
150x900 mm



Art. 408A06
Ghisa
185x1150 mm



Art. 408A07
Ghisa
100 x 840 mm



Art. 408B01
Ø base 130 mm H 940 mm



Art. 408B02
Ø base 50 mm H 860 mm



Art. 408B03
Ø base 100 mm H 760 mm



Art. 408B04
Ø base 75 mm H 960 mm



Art. 408B05
Ø base 100 mm H 930 mm



Art. 408B06
Ø base 110 mm H 650 mm



Art. 409A01
 12x6
 350x350 mm

COMPONENTI PER ART. 409A01



Art. 409A02
 Φ 12 mm
 L= 110 mm
 H=175 mm



Art. 409A03
 2 mezzi gusci in ghisa
 75 mm



Art. **410A01** 800x230 mm



Art. **410A02** 800x350 mm



Art. **410A03** 800x240 mm



Art. **410A04** 800x200 mm